

CHRYSLER Quick LOP

Over VUE

QuickLOP provides you with real-time access to Chrysler's Labor Operation (LOP) data. For use in Warranty Repair Orders to reduce claim rejection and faster payment.

Note: The QuickLOP interface does not provide Labor Operation Information prior to Model Year 2000.

QuickLOP allows you to perform the following inquiries based on a VIN (or Drive Type, Model Year, or Model) and Repair Order Date.

1. When the 8-position LOP code is known - Detailed LOP information, including hours, notes, and available failure codes, is returned.
2. When only part of the LOP code is known (for example, 0750 Cooling Water Pump) - A list of LOP codes that begin with the partial LOP code is returned.
3. Search by LOP Description, Technical Service Bulletin (TSB), or Recall - A list of LOP codes that match the search criteria is returned.
4. You can search by TSB, Recall, Part Number, or LOP Description.

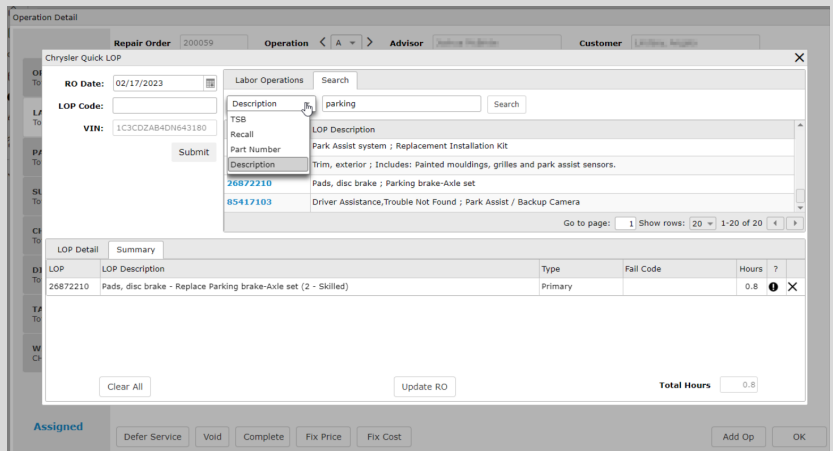
Step by Step

Navigate to Service > Advisor > Repair Order

1. Filter/Sort the primary grid to locate the Repair Order.
2. Select the Repair Order by clicking on the corresponding line.

Within the Repair Order screen:

1. Select the repair order by clicking on the row.
2. Open the Operation Detail.
3. Click on the Labor Time Guide button.



Using the Wiring Harness to obtain a LOP code.

When a partial LOP inquiry results in a Wiring Diagram screen, use the diagram to identify the location of the repair. Enter the last two characters of the LOP code in order to identify a full 8-position LOP code.

An example of a wiring harness diagram for a LOP code beginning with 0891BB.

If the user inquires about partial LOP code 0891BB, the diagram will display for the user to select the last two positions of the LOP code.

